

Research Support Services: the rationale for a new partnership and roles at the University of Leicester Library

Louise Jones
Director of Library Services
lj14@le.ac.uk

“libraries contribute to the research performance of individuals and institutions in many different ways, even if the nature and extent of that contribution is not well understood by researchers and senior managers”

The Value of Libraries for Research and Researchers (RIN, 2011)



University of
Leicester

“Elite,
without being
elitist...”





University of
Leicester

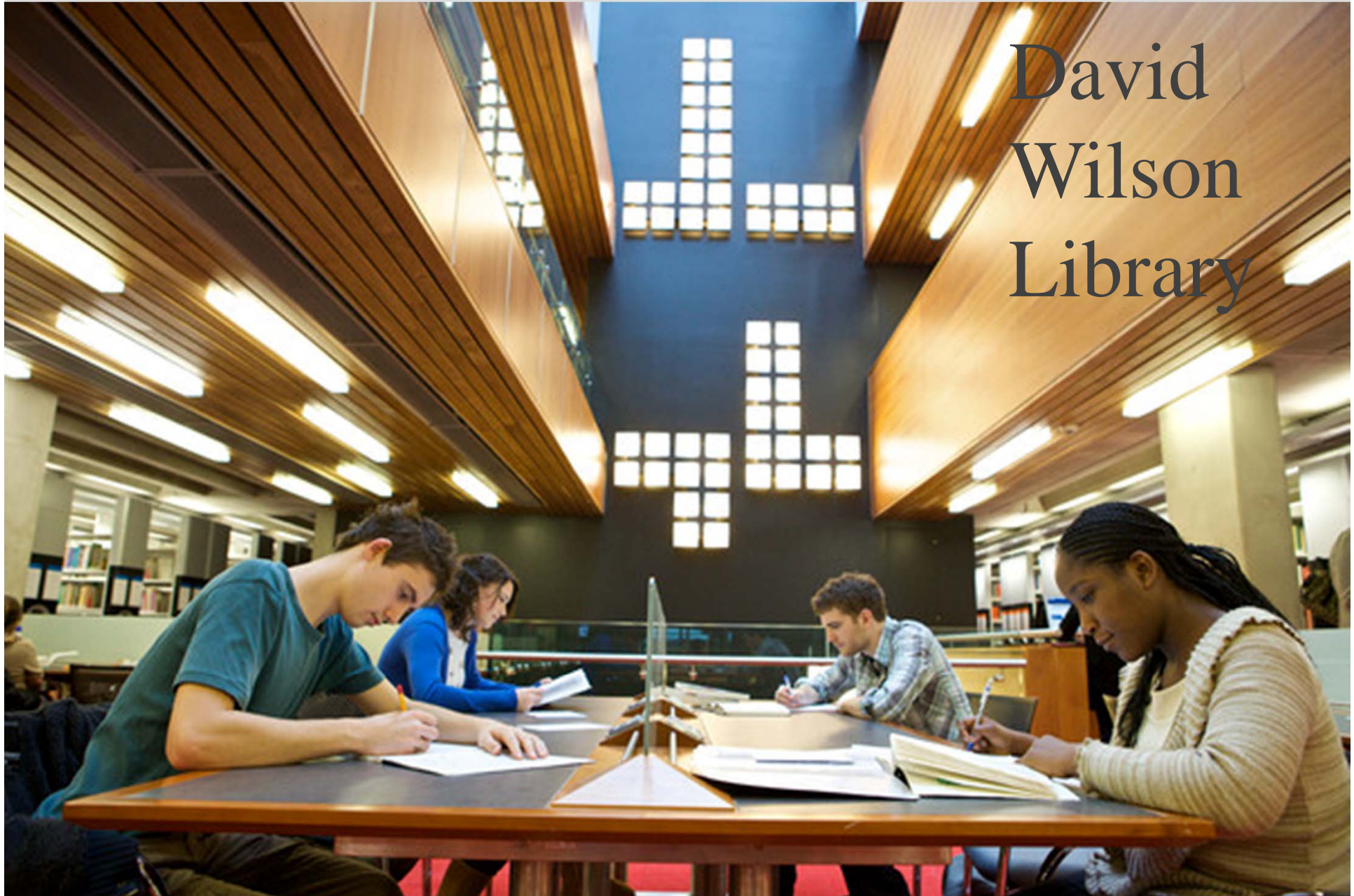
A photograph showing a row of white ceramic mortar and pestle sets arranged on a white shelf. The mortars are in the foreground, and the pestles are resting inside them. The background is softly blurred, showing more of the same sets receding into the distance.

Research Support Office



University of
Leicester

David Wilson Library



Collaboration

- Barriers
 - Internal pressures and professional ignorance
 - Governance structure
- Drivers
 - Open access
 - Promotion of Leicester's research
 - Research funders policies and open access publication funds
 - External research assessment

Differing perspectives

- Library user/Researcher
- Departmental Library representative/ Departmental Research Administrator
- Policy perspective/advocacy perspective

Benefits of collaboration

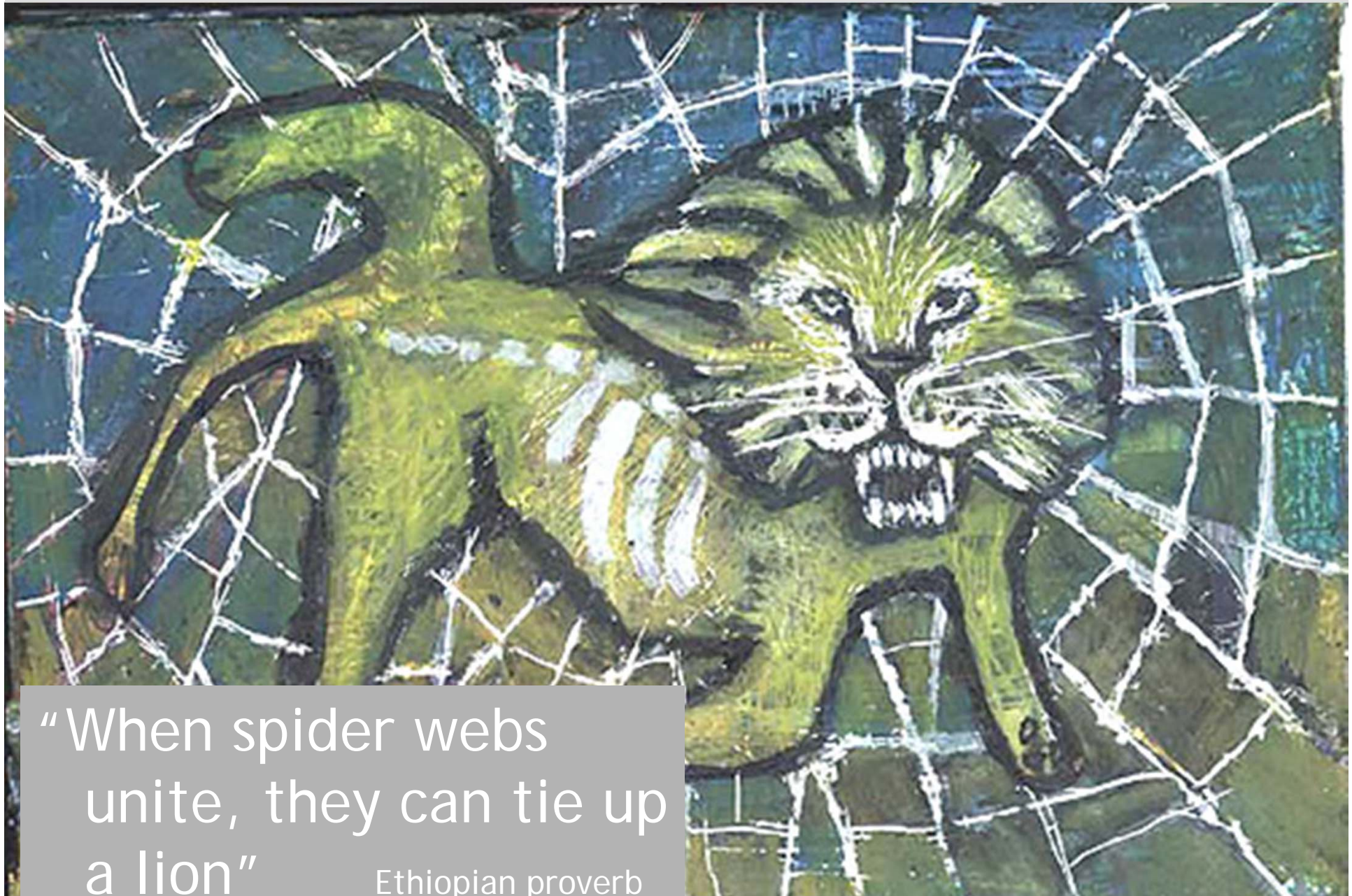
- Both gain credibility
- Quality checked submission for RAE
- Joint promotion of
 - open access mandate
 - open access publication funding
 - Research funding opportunities tools
- Provision of advice
- Bids for external funding
- Informal sharing of knowledge over coffee

Research Information Management

- Internal publications database & LRA not well populated
- Implementation of a new research information management system
- Integration between IRIS and the Institutional Repository
- Bibliometrics



University of
Leicester



“When spider webs
unite, they can tie up
a lion”
Ethiopian proverb